

Montague House, Durham

£625 pcm



Full Description

Situated on Sunderland Road in Gilesgate, this top floor flat is excellent for young professionals and couples needing to commute. The apartment is neutrally decorated giving it a light and airy feel. The furnishings provided are of a high standard and white goods are included. The central heating is provided by a combi boiler and the property is fully double glazed.

The apartment briefly comprises, entrance hall with secure entry intercom, burglar alarm, smoke alarm and storage cupboard. There is a large living room with a Juliette balcony, two sofas and occasional tables. A modern fitted kitchen/diner including washer, gas hob, electric oven, fridge freezer and dining area with table and chairs. The apartment benefits from two large double bedrooms ideal for professionals sharing. Both bedrooms have fitted wardrobes providing ample storage. The bathroom has a white

Features

- Fully furnished
- Two double bedrooms
- Ideal for professionals
- Spacious property
- Popular residential area
- Secure door entry system
- Easy access to Durham city centre
- All local amenities nearby
- Secure Parking
- Excellent transport links
- Council Tax Band B

three piece suite with shower over bath.

There is one secure allocated parking space via a gated system with entry fob. The apartment block is attractive and well maintained and there is no additional service charge to the tenant.

Our costs are as follows: if you have viewed the property and wish to apply there is a fixed admin fee of £250 (inc vat). On the day that you move in you will need to pay one month's rent and the damage bond. We are members of a client money protection scheme and The Property Ombudsman.

Contact Us

fraser lake

Arch 5 Hymers Court, Brandling Street

Gateshead

NE8 2BA

T: 0191 4783456

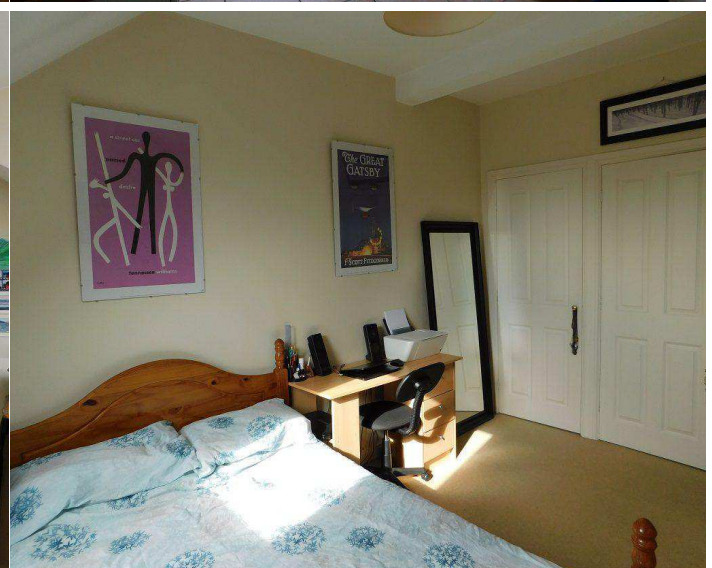
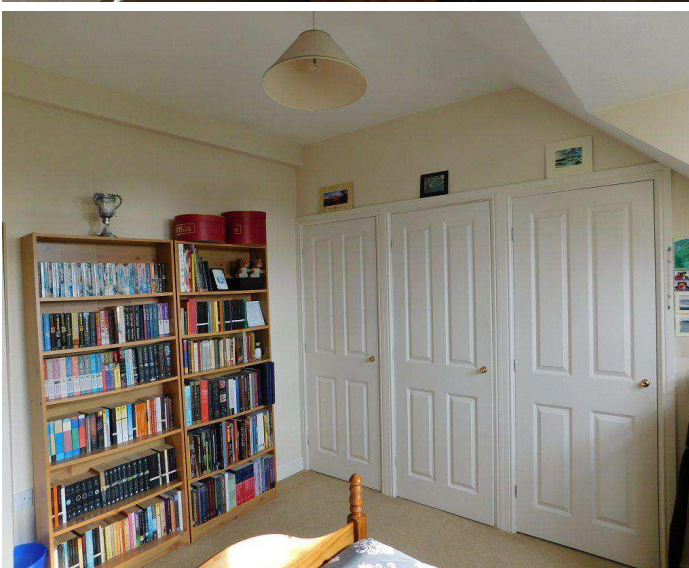
E: info@fraserlake.co.uk

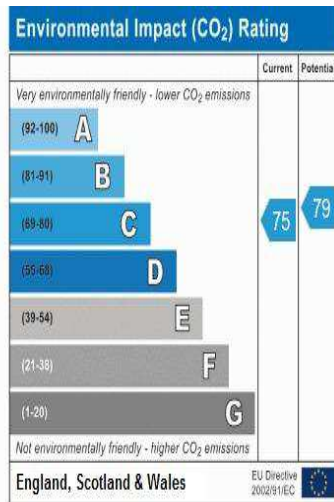
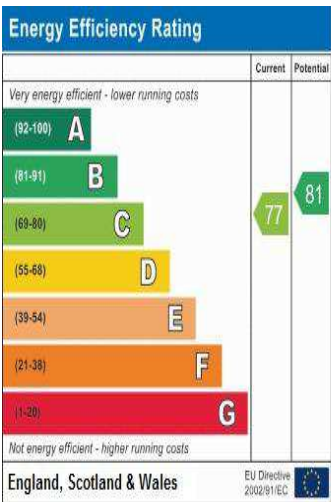
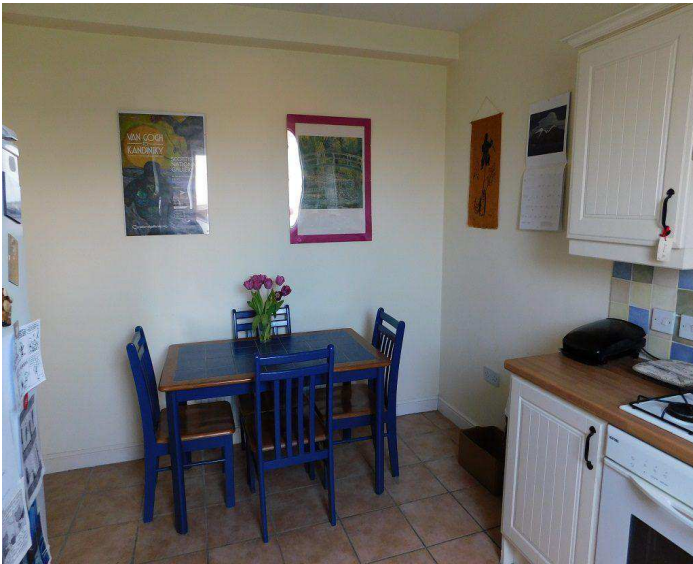
Lounge (4.25 x 4.10)

Bedroom 1 (4.60 x 2.84)

Bedroom 2 (3.60 x 3.50)

Kitchen / dining area (4.15 x 2.85)





Reference:
Bmontaguehouse