



# The Ropery, Newcastle Upon Tyne

£595 pcm



## Full Description

A superb 2 bedroom ground floor apartment located in the fashionable St Peters Basin estate, just a short distance for all of the attraction that Newcastle's Quayside has to offer. The apartment is offered on an unfurnished basis and briefly comprises: Entrance lobby, living room with patio doors leading to the private rear garden, shaker style fitted kitchen with integrated appliances, two double bedrooms and a modern white bathroom suite with a shower over the bath. Neutral decor throughout. Externally there is allocated parking to the front of the property and to the rear there is a private garden with mature shrubs. Viewing is essential to appreciate the accommodation on offer and the location. with panoramic views spanning the River Tyne.

Our costs are as follows: if you have viewed the property and wish to

## Features

- 2 double bedrooms make it ideal for professionals sharing
- Allocated parking
- Small garden with river views
- Excellent views of the River Tyne
- Neutral decor throughout
- White goods included
- Central heating & double glazed
- Council tax band D

apply there is a fixed admin fee of £250 (inc vat). On the day that you move in you will need to pay one month's rent and the damage bond. We are members of a client money protection scheme and The Property Ombudsman.

### Contact Us

**fraser lake**

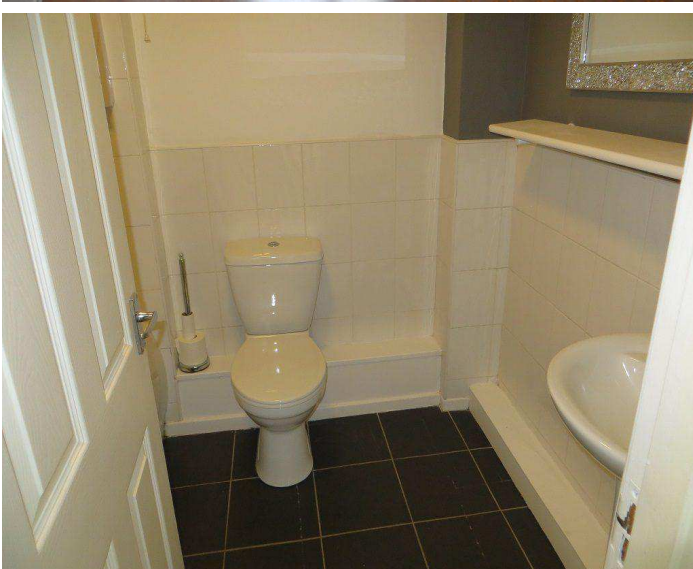
Arch 5 Hymers Court, Brandling Street

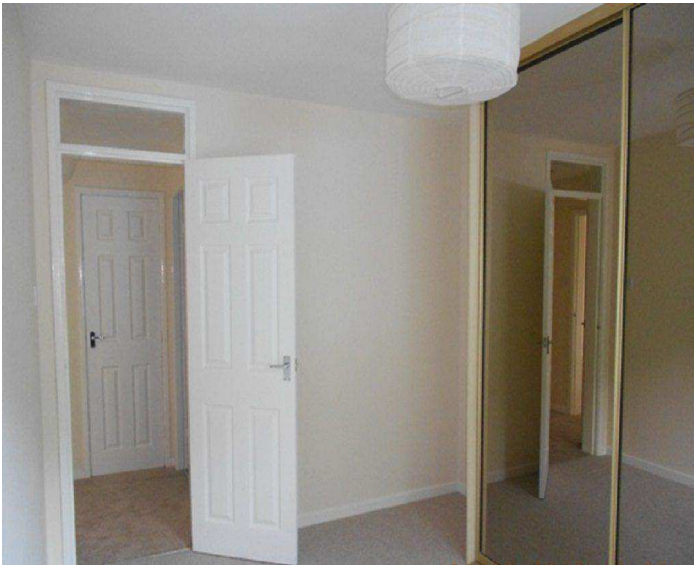
Gateshead

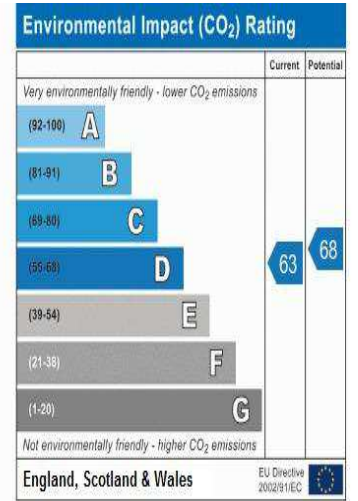
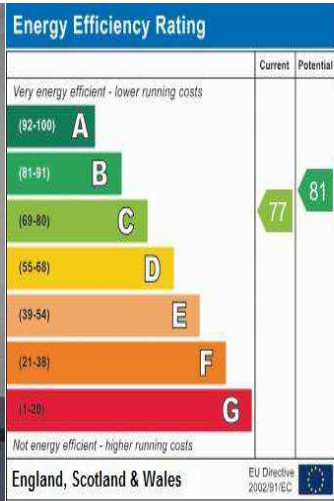
NE8 2BA

T: 0191 4783456

E: info@fraserlake.co.uk







Reference:  
Ntheropery